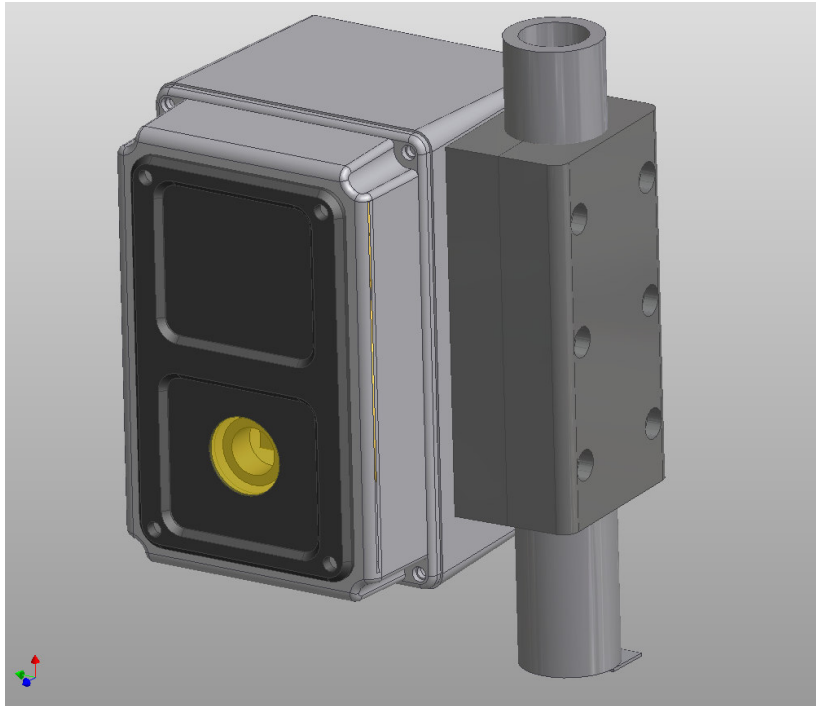


V8448-00-xx 24 Hour Axle-Viewing Camera



Description

The V8448 Camera is a sensitive day/night camera which incorporates ring IR lighting for 24 hour observation of vehicle wheel axles from a near-kerb position. The rugged case has been designed to minimise interest from passers-by, with the aim of looking like an electrical junction box. In order to guarantee good illumination both nearby and at the limits of camera range, a 2nd IR light ring has been fitted above the camera. Specifications for both units are as below. The unit is fully sealed to IP57. The IR window plate is easily replaced in the event of damage.

One important characteristic of the camera is the 48 zone backlight compensation capability – this will help maintain good contrast on dark wheel axles while operating with a high-brightness sky background.

Camera Module Detailed Specification

High-sensitivity colour camera that offers clear vision during the day and night using the integrated x-vision DSP chip that switches the camera picture to B/W mode and turns on the integrated Infra Red LEDs when it detects that the environment is getting dark.

Features:

- Excellent colour vision during the day or in a lit room and up to 10 metres vision in complete darkness (at night or when the lights are turned off), no additional light source is needed as the camera has built in Infra Red LEDs which turn on only when the camera switches to B/W (Night/Dark) mode.
- The camera emits infra red light when in night/dark mode, to the human eye this type of light is invisible, however to the camera the light is clearly visible, making it ideal for both covert use, and where neighbours or the environment (such as a busy road) may not allow the use of cameras with visible lighting
- Focus free 50° lens for easy setup
- State of the art x-vision DSP chip on board which offers:
 - 48 Zone Automatic Back Light Compensation
 - Automatic Gain Control
 - Automatic Electronic Iris Control
 - Automatic White Balance
 - Zero color rolling
 - 48 dB S/N Ratio
 - Low smear
 - Edge enhancement

- Infra Red LEDs are very economical to run and replace when compared to other lighting methods
- Wall/Ceiling mount bracket supplied
- Suitable for Internal or External use
- 1 Year Guarantee

Specifications:

Manufacturer:	VES ltd
Resolution:	420 TVL
Image Sensor:	1/4" Panasonic Digital CCD with x-vision G1 DSP
Minimum Illumination:	0.5 lux
Lens:	4.3mm (50°)

IR distance/angle:	<p>10 metres @ 10° 8 metres @ 30° 5 metres @ 70°</p>
	<p>0M 5M 10M</p> <p>10° 30° 70°</p>
IR Wave:	840nm
LEDs:	12x Infra Red LEDs
Video Signal Output:	1V pk-pk into 75 ohms
Operating voltage:	12V DC
Current consumption:	Day Mode: 110mA Night Mode: 260mA
Weatherproofing:	IP57 (internal or external use)
Dimensions (ØxL):	53 x 93mm

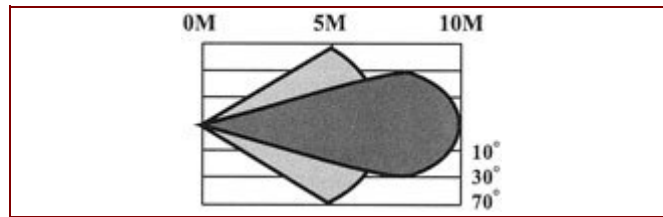
Lighting Module Detailed Specification

High Quality Infra Red LED Lamp for use with our IR sensitive and Day/Night cameras. Uses the very latest Blue Infra Red LEDs which offer double the life and picture quality of clear Infra Red LEDs.

Features:

- designed for use with any IR sensitive or Day/Night camera
- Uses Blue Infra Red LEDs for longer life (1 Year Guarantee) and clearer picture quality than clear Infra Red LEDs as used by some competitors products
- Because the lamp emits infra red light to the human eye this is invisible, however to a B/W or Day/Night camera the light is clearly visible, making it ideal for both covert use, and where neighbours or the environment (such as a busy road) may not allow the use of visible lighting
- Can be mounted in three different ways:
 - On to a wall or ceiling using the integrated bracket
 - On to an internal camera bracket
 - On to an external camera housing and bracket
- Infra Red LEDs are very economical to run and replace when compared to other lighting methods
- 12V DC Input/Output for easy connection
- Integrated Photocell automatically turns on the lamp when it detects darkness and turns it off when not required, eg. during the day
- Made out of weatherproof aluminium, suitable for Internal or External use
- 2 Year Guarantee (1 Year on LEDs)

IR Range:



The IR range will vary depending on the environment, and the lux level of the camera, the following are estimates based on clear conditions (eg. no fog or heavy rain):

<i>0 to 0.05 lux rated cameras:</i>		<i>0.06 to 0.3 lux rated cameras:</i>		<i>0.4 lux to 1.0 lux rated cameras:</i>	
20 metres	10°	10 metres	10°	5 metres	10°
16 metres	30°	8 metres	30°	4 metres	30°
10 metres	70°	5 metres	70°	2.5 metres	70°

Specifications:

IR distance:	2.5 to 20 metres
IR angle:	Up to 70°
IR Wave:	840nm
LEDs:	28x Blue Infra Red LEDs
Auto Power On/Off:	Controlled by Photocell: Power On: Below 10 lux Power Off: Above 10 lux
Operating voltage:	12V DC
Current consumption:	450mA
Operating Temperature:	-20°C to +60°C
Weatherproofing:	None, see outer case spec.
Dimensions(ØxL):	49x60mm
Weight:	175g

Copyright 2005 Vision Engineering Services Ltd.

Supplied by: [Vision Engineering Services Ltd. UK](#)
Phone/Fax: 44-1252-674941
Email: enquiries@ves-eng.co.uk
Web: www.ves-eng.co.uk